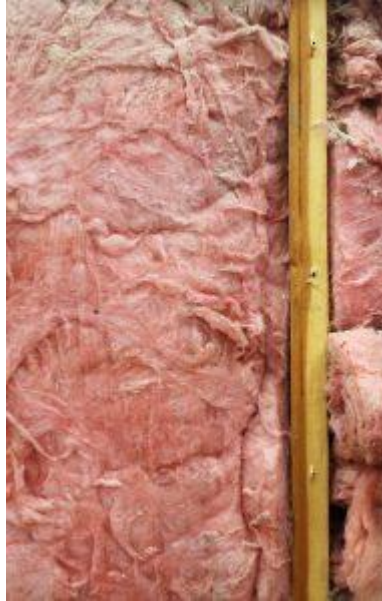




# NEWSLETTER



## WHICH SIDE SHOULD THE VAPOR BARRIER ON INSULATION FACE?

During our inspections we very often see insulation installed improperly in the attic. Insulation has a vapor barrier which is intended to avoid moisture and mold buildup and stop airflow through the insulation. If the vapor barrier is facing the living space the moisture is stopped before it gets to the insulation. If the vapor barrier is installed upside down (not towards the living area) often it deteriorates the insulation and the vapor barrier and makes the insulation less efficient.

If the house is occupied, there is a substantial amount of moisture in the air from cooking, bathing, washing, and even breathing. So, we want to keep that moisture in the living area of the house rather than having it go through the ceiling, through the insulation and then hitting the vapor barrier where it can condense and build up moisture, causing the issues as explained above.

The moral of the story is, install the insulation with the vapor barrier facing the living space of the house.

For more related information click on this link:

<https://safeharborinspections.com/blog/>